

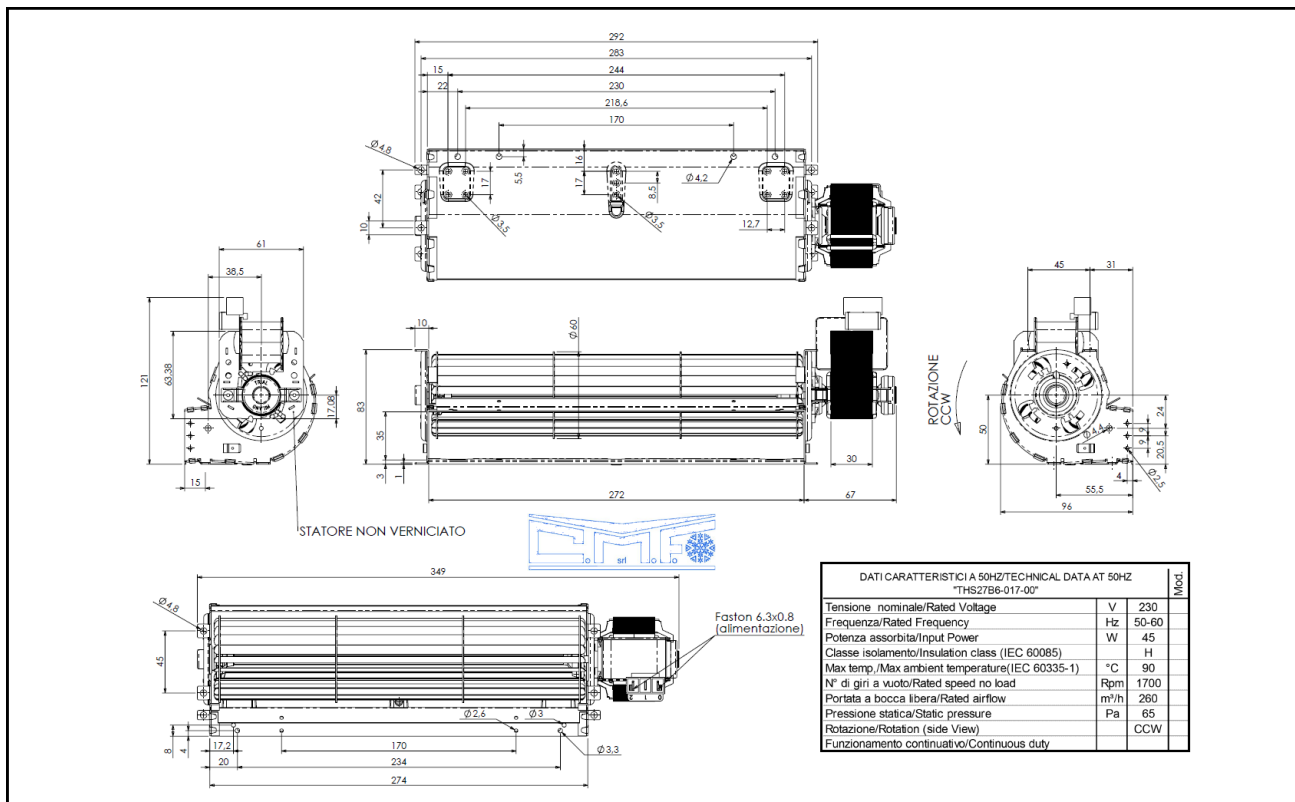




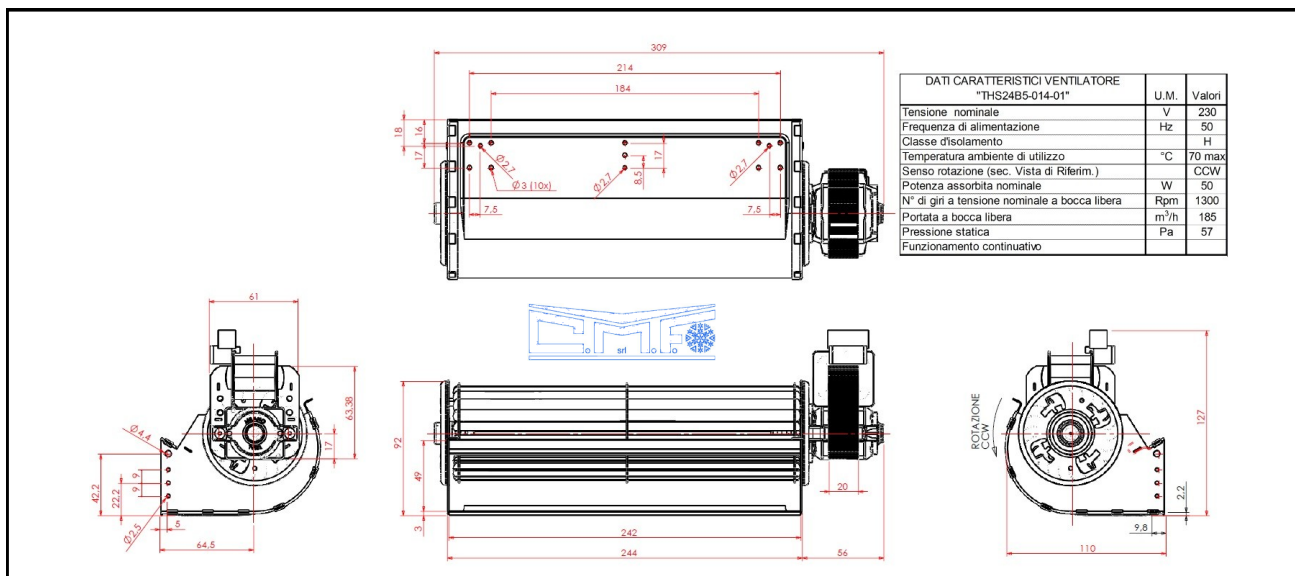
# SERIE TRIAL

VENTILATORI PER STUFE A PELLETTA

FANS FOR PELLETTA STOVES



Codice/Modello	V	HZ	W	RPM	MC/H	Pressione PA
<b>THS27B6-017-00</b>	230	50/60	45	1700	260	65
<b>TFA744-D1-PT160</b>						



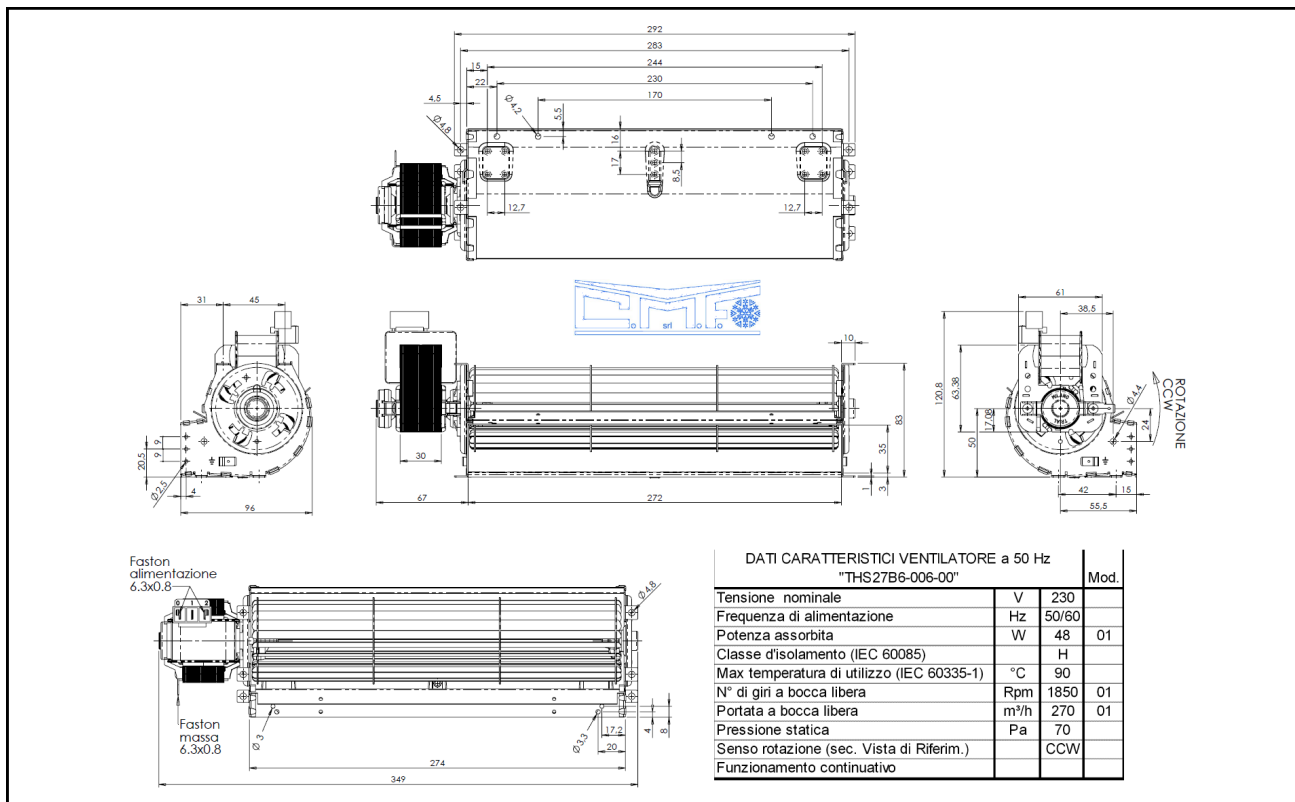
Codice/Modello	V	HZ	W	RPM	MC/H	Pressione PA
<b>THS24B5-014-01</b>	230	50	50	1300	185	57
<b>TFA664-D1-PT 160-P</b>						



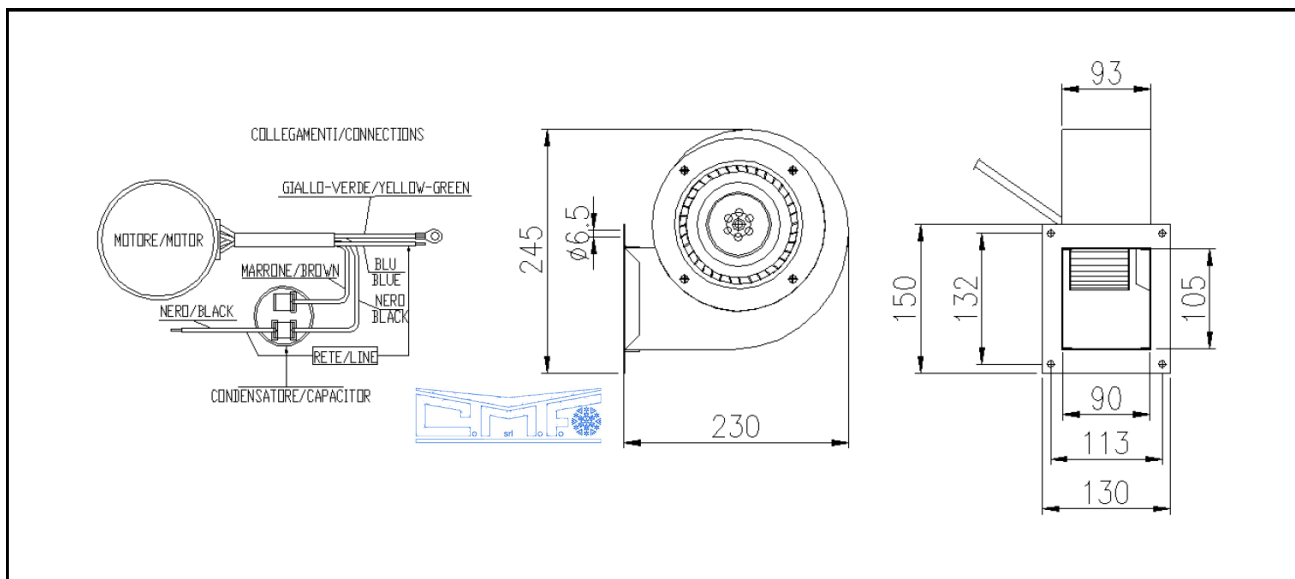
# SERIE TRIAL

VENTILATORI PER STUFE A PELLETTA

FANS FOR PELLETTA STOVES



Codice/Modello	V	HZ	W	RPM	MC/H	Pressione PA
<b>THS27B6-06-00</b>	230	50/60	48	1850	270	70
<b>TFA725-S2-PT160-PMO 0°</b>						

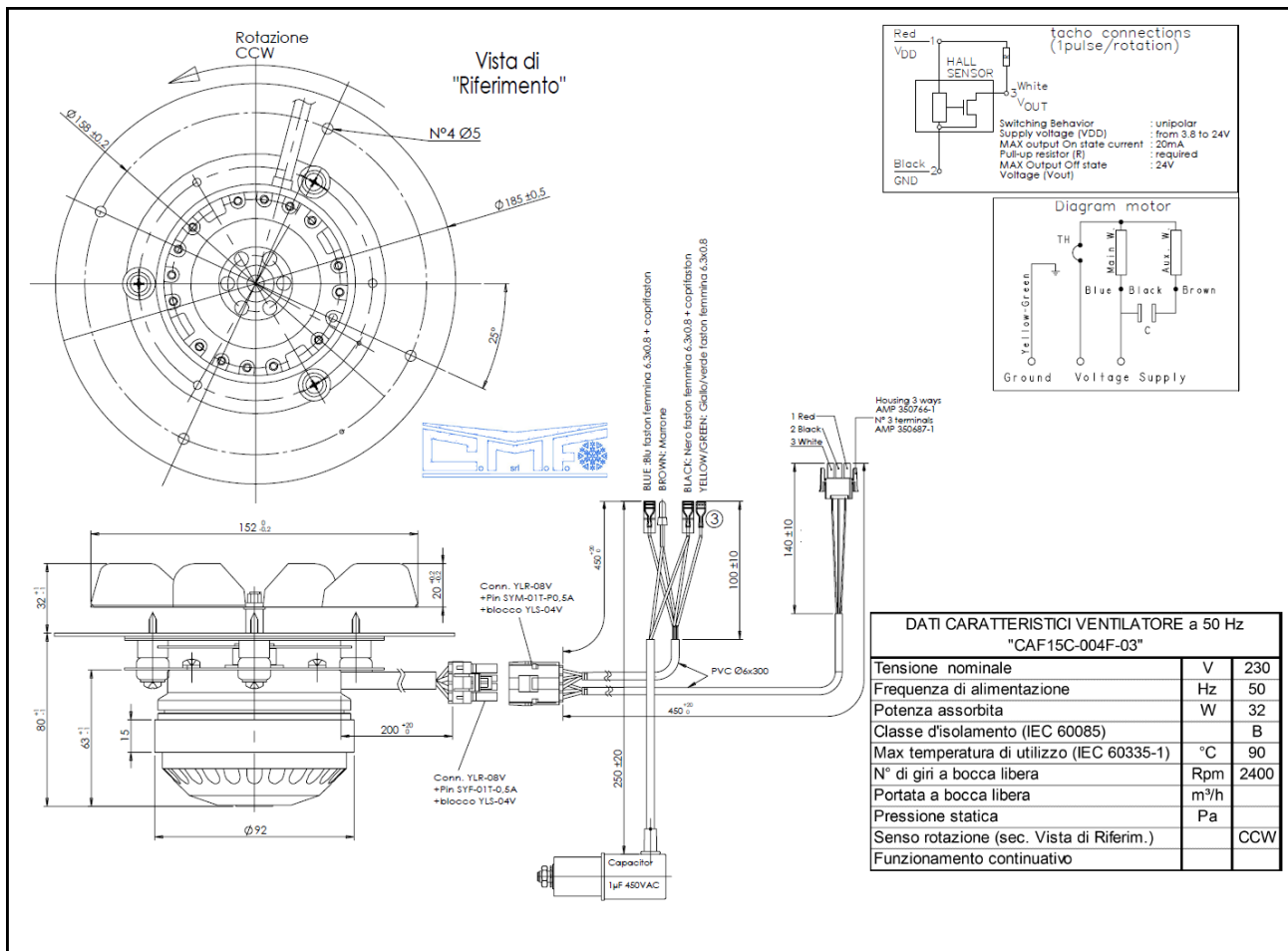
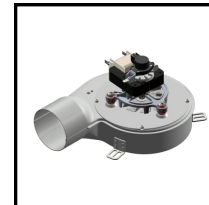


Codice/Modello	V	HZ	W	RPM	MC/H	Pressione PA
<b>VC14/LARE</b>	230	50/60	120	1750	420	350
<b>VCE48545</b>						

# SERIE TRIAL

VENTILATORI PER STUFE A PELLETTA

FANS FOR PELLETTA STOVES

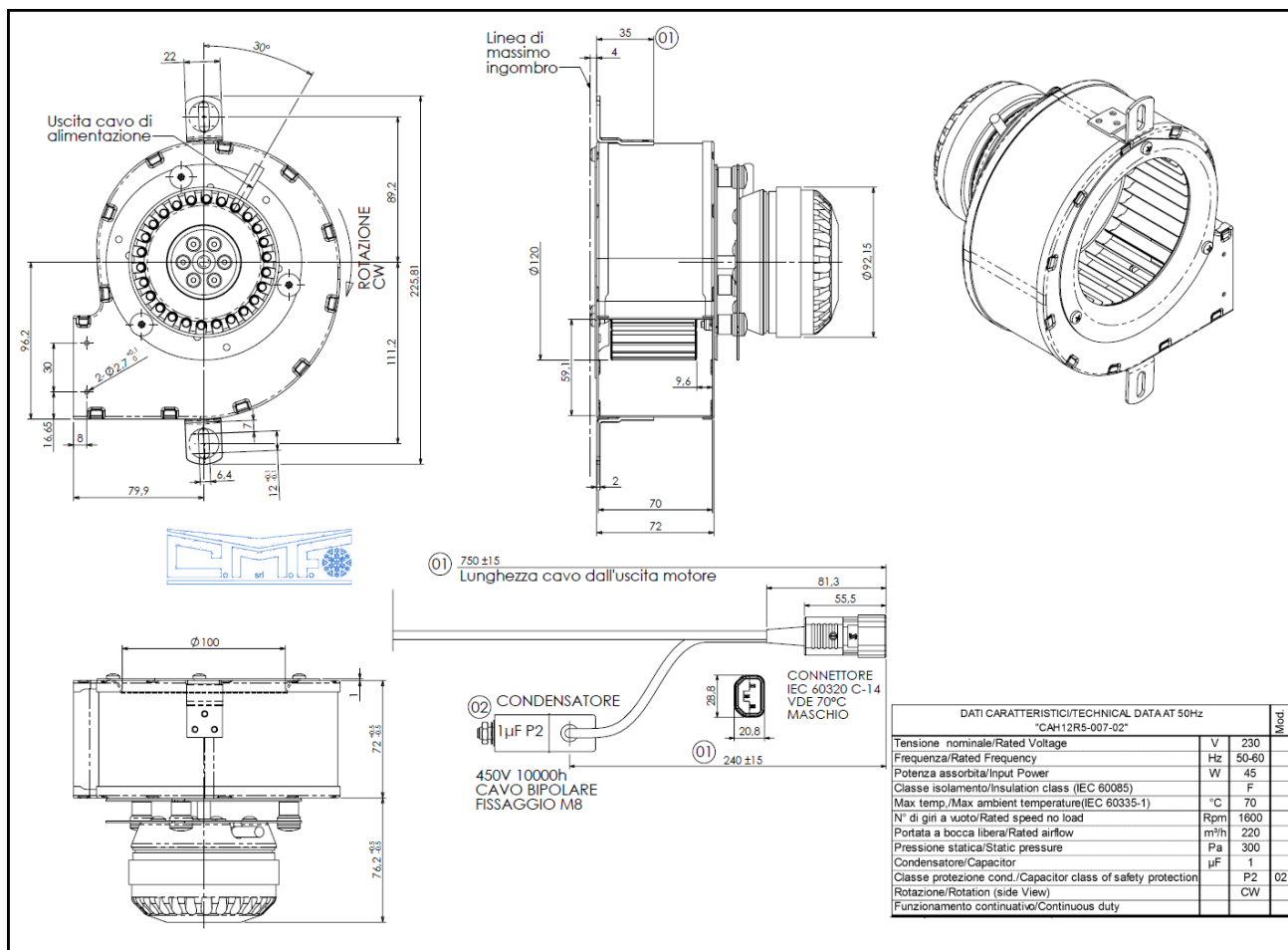


Codice/Modello	V	HZ	W	RPM	Max tem.	Classe Isol.
<b>CAF15C-004F-03</b> <b>VENTILATORE PER FUMI 32W</b>	230	50	32	2400	90 °C	B

# SERIE TRIAL

VENTILATORI PER STUFE A PELLETTA

FANS FOR PELLETTA STOVES

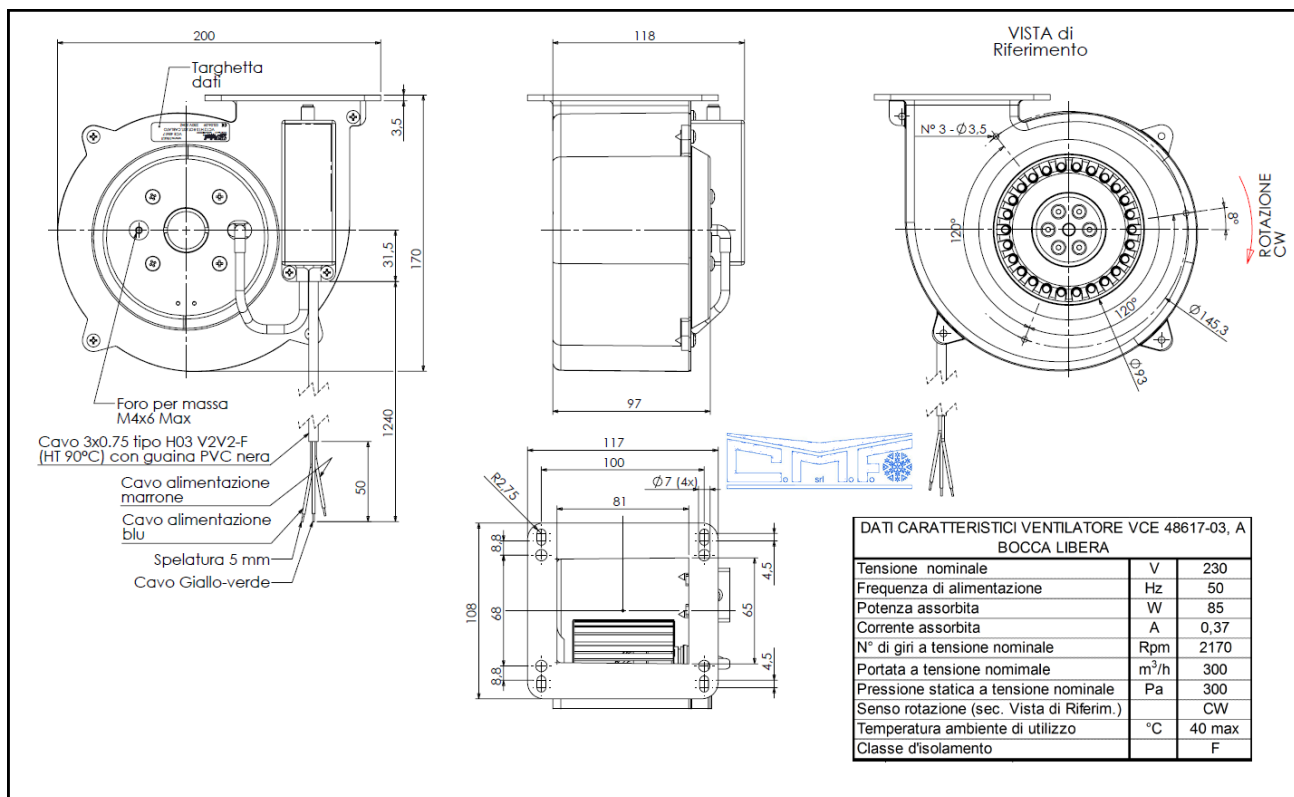


Codice/Modello	V	HZ	W	RPM	Max tem.	Classe Isol.
CAH12R5-007-02	230	50/60	45	1600	70	F
CREH15-120X52-D1						

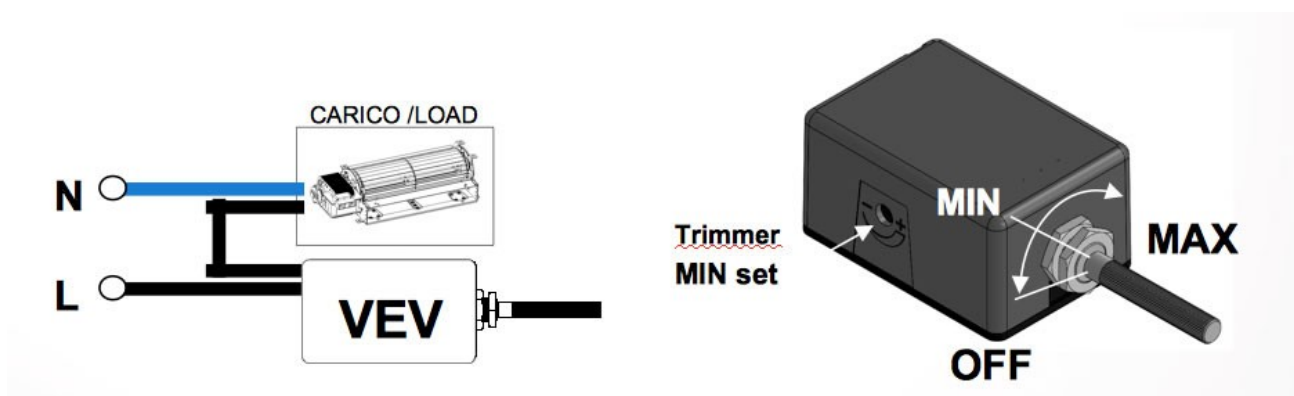
# SERIE TRIAL

VENTILATORI PER STUFE A PELLETTA

FANS FOR PELLETTA STOVES



Codice/Modello	V	HZ	W	RPM	MC/H	Pressione PA
VCE48617	230	50	85	2170	300	300
VC12RE						



**CODICE VEV-07757**

REGOLATORI PER VENTILATORI TANGENZIALI 230V CORR. MAX 1,5A

